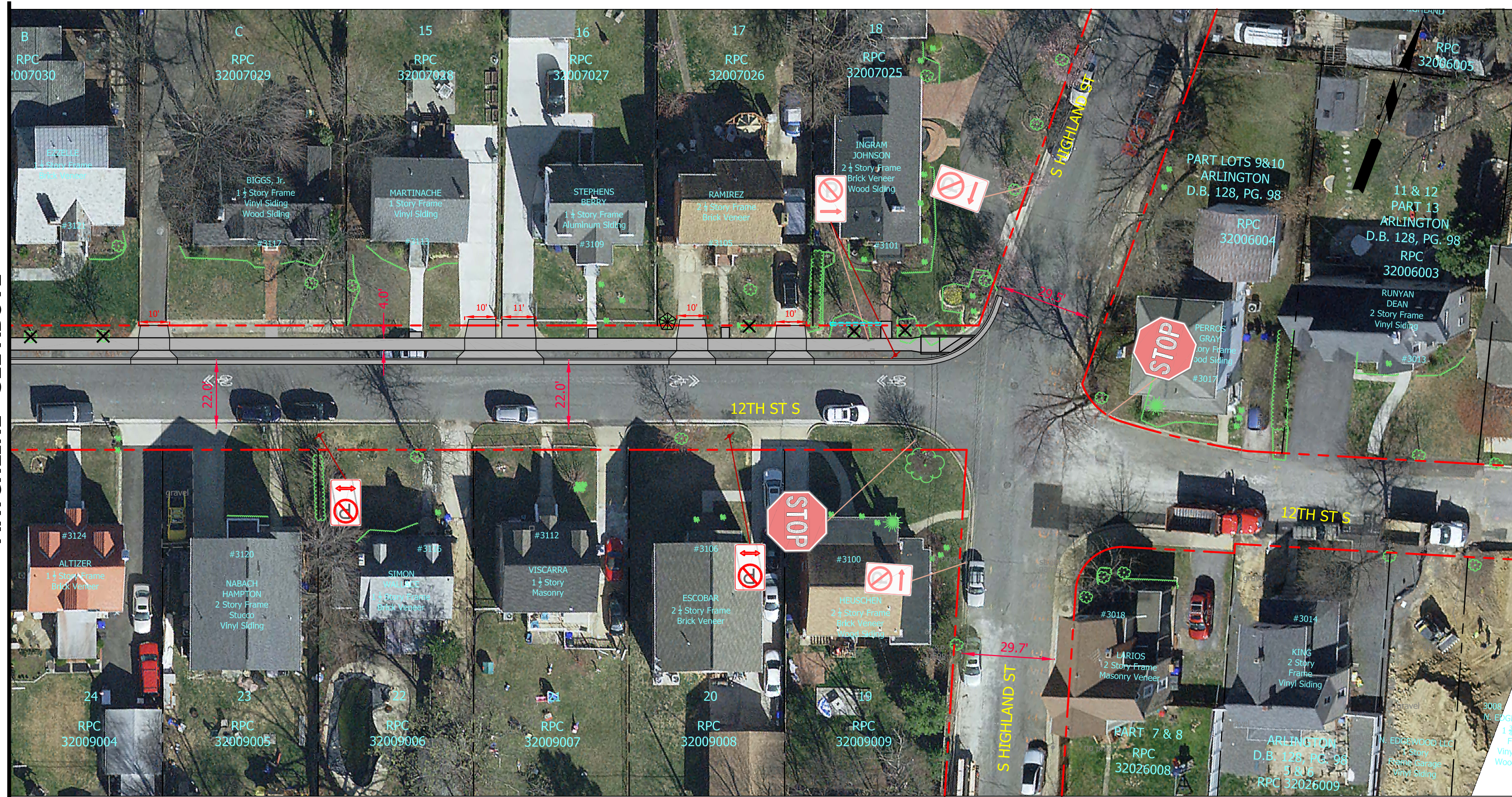




MATCHLINE - SEE BELOW



MATCHLINE - SEE ABOVE



DEPARTMENT OF ENVIRONMENTAL SERVICES
 FACILITIES & ENGINEERING DIVISION
 ENGINEERING BUREAU
 2100 CLARENDON BOULEVARD, SUITE 813
 ARLINGTON, VA 22201
 PHONE: 703.228.3629
 FAX: 703.228.3606

COPYRIGHT © 2016 ARLINGTON COUNTY VIRGINIA - ALL RIGHTS RESERVED

SEAL
 30%
 SUBMISSION

(NOT FOR CONSTRUCTION)
 APPROVALS DATE

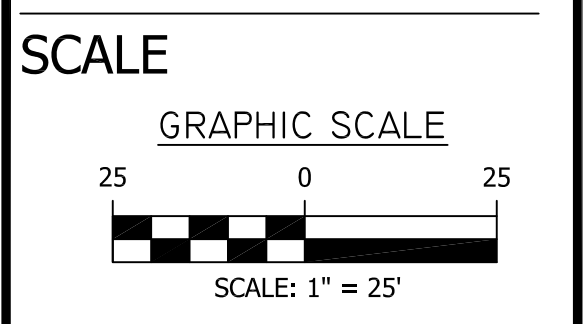
QUALITY CONTROL ENGINEER _____
 WATER, SEWER STREETS BUREAU CHIEF _____
 TRANSPORTATION DIRECTOR _____
 PROJECT MANAGER _____

REVISIONS	DATE

PROJECT NAME AND LOCATION
 12TH ST S
 PROPOSED CONDITIONS
 S GLEBE RD (VA RTE 120) TO S HIGHLAND ST
 Z286

DESIGNED: J LIN
 DRAWN: J LIN
 CHECKED: M J TROUT
 MISS UTILITY TRANSMITTAL #: 5326

FILENAME: 30% PUBLIC MEETING.DWG
 PATH: \\DATA\AZ\DESIGN\ACTIVE\30% PUBLIC MEETING
 PLOTTED: APRIL 5 2018
 PLOTTED BY: JILIN



SHEET
 3